



BARTON  
BUSINESS  
SCHOOL

# Master of Teaching

(Early Childhood Education)

*your gateway to the future*



# Introduction

## Discover Barton Business School

At Barton Business School (BBS), we are more than a registered Institute of Higher Education. We are a place where future professionals, educators, and leaders are prepared for meaningful and impactful careers. Our courses are designed to equip you with the knowledge, skills, and confidence needed to excel in a rapidly evolving world.

We combine academic rigour with industry insight and a forward-thinking, student-centred approach. Our learning environment encourages critical thinking, innovation, and the questioning of established ideas. Diversity, gender equality, and intellectual freedom are central to who we are. Through engaging, applied, and immersive learning experiences, you will be well-prepared to succeed in your chosen profession and contribute positively to your community and the broader global landscape.

We blend industry expertise with a forward-thinking approach.



# Contents

02	04	08
Introduction: Discover Barton Business School	Master of Teaching (Early Childhood Education)	Quick Facts
11	12	13
Ready to take the next step?	Course Structure	Early childhood teacher registration and professional accreditation
14	16	
Eligibility	Contact Details	





# Master of Teaching (Early Childhood Education):

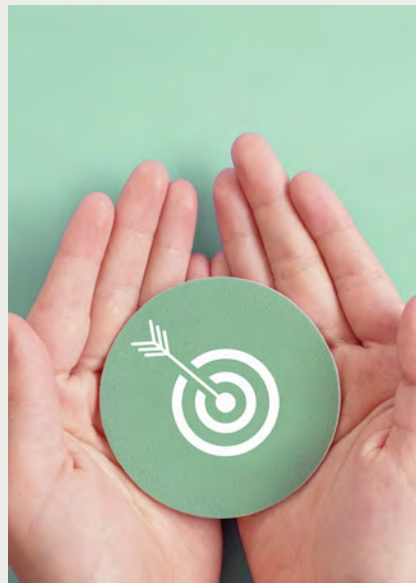
*Opening doors to a career in Education*

The Master of Teaching (Early Childhood Education) (MTeach(ECE)) prepares graduates to make a meaningful contribution to the lives of children from birth to age five across a wide range of early childhood settings. This course opens the door to careers as early childhood educators, kindergarten teachers, and educational leaders who are equipped to shape the future of young learners.



## Flexible & Future-Focused

opportunities for the future



## Accredited Excellence

reflecting our high standards



## Career-Ready Learning

equipping you with a wide range of skills

We prepare graduates to become educational leaders who are equipped to shape the future of young learners.



At Barton Business School, we put our students first

BBS is there every step of the way.





Graduates of BBS will be responsive to change and prepared for lifelong learning in pursuit of personal and professional development.

Graduates of BBS will be able to think globally about issues in their profession.



Students learn to design and deliver high-quality education programs.

Built on a strong foundation in child development and contemporary early childhood research, the course blends academic excellence with practical, real-world relevance. Students learn to design and deliver high-quality education programs that respond to each child's developmental needs, interests, and cultural background. The curriculum emphasises evidence-based, innovative approaches that enable graduates to foster inclusive, engaging, and nurturing learning environments.



staying ahead in a rapidly evolving world



tailor learning to your professional interests



graduate with a highly regarded MTeach(ECE)

A key feature of the MTeach(ECE) is its nested structure. The first year of the MTeach(ECE) is fully aligned with the Graduate Diploma of Early Childhood Education (GDECE), giving students the flexibility to complete the GDECE as an exit qualification or continue into the second year to complete the full MTeach(ECE).

Embedded professional placements provide valuable hands-on experience, while a strong focus on leadership builds the confidence and capability to advocate for equitable, high-quality early childhood education.

Graduates emerge as skilled, compassionate professionals ready to empower children, support families, and contribute positively to the sector.



# Quick Facts

## About the MTeach(ECE)

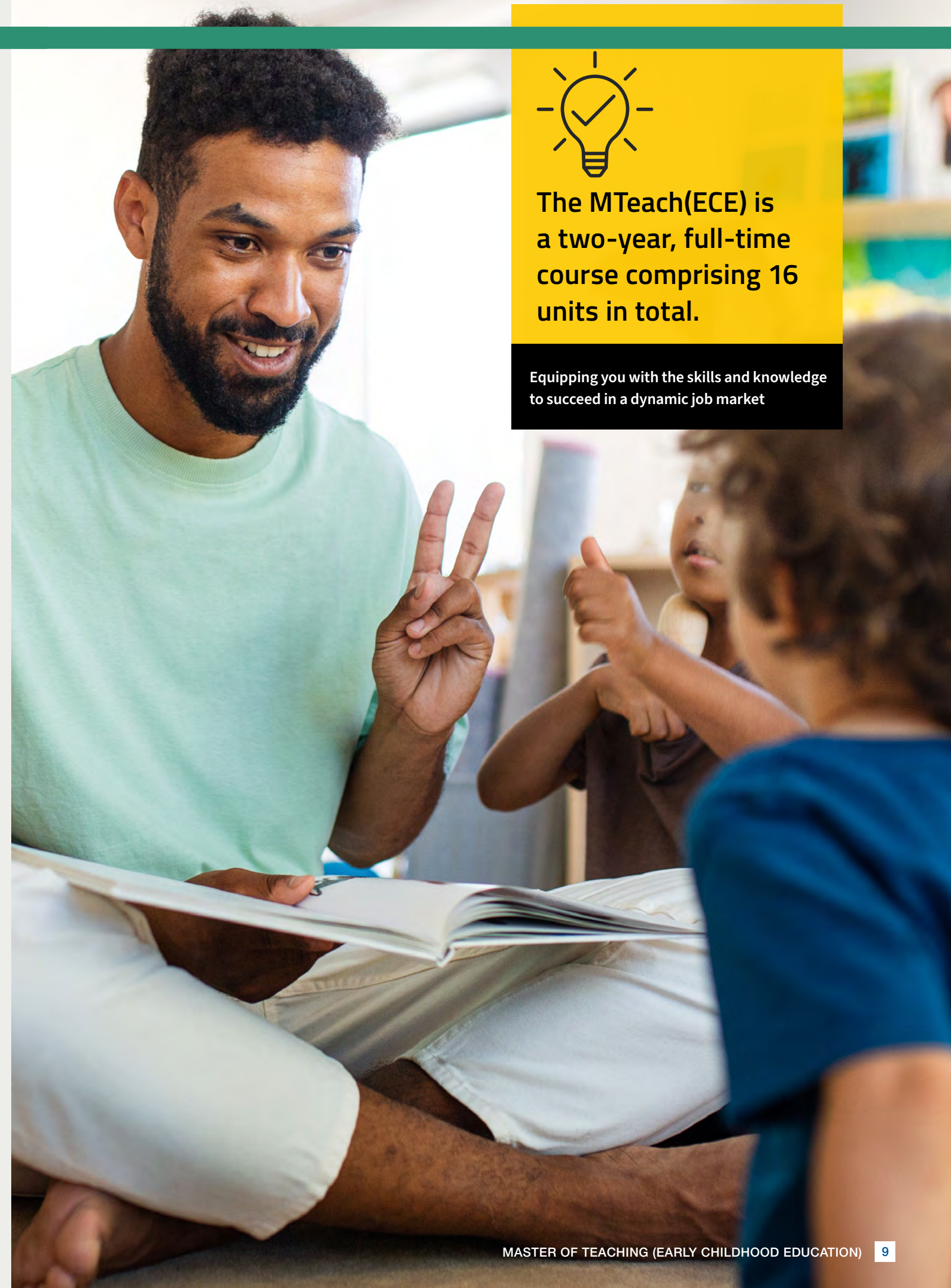
- **Overview:** MTeach(ECE) prepares graduates to make a meaningful contribution to the lives of children from birth to age five across a wide range of early childhood settings.
  - **Structure:** The MTeach(ECE) is a two-year, full-time course comprising 16 units in total. Students complete 15 core units and one elective, which together amount to 192 credit points. All 16 units must be successfully completed to graduate from the MTeach(ECE).
  - **Credit Points:** Each unit carries 12 credit points, resulting in a total of 192 credit points for the course.
  - **Duration:** The MTeach(ECE) spans over four semesters (two years, full-time).
  - **Mode of Study:** The MTeach(ECE) is delivered face-to-face at the BBS campus.
  - **Professional Placement:** Professional experience is embedded within three units, with a total of 70 days. These units are:
    - EDE401 Curriculum Design and Assessment in Early Childhood Education (Year 1, Semester 1)
    - EDE405 Ethics, Professional Identity, and Leadership in Early Childhood Education (Year 1, Semester 2)
    - EDE508 Research Project B: Preferential Specialised Project (Year 2, Semester 2)
  - **Fees:**
    - Domestic: \$56,000 (\$3,500 per unit)
    - International: \$56,000 (\$3,500 per unit)
- Please note:*
- Barton Business School does not guarantee migration outcomes or specific employment results from undertaking our courses. Our commitment is to provide you with a quality education that equips you with the skills and knowledge to succeed in a dynamic job market.
  - Prerequisites may apply. Confirm with the admissions team when enrolling.
  - Interim awards need to be requested and are not granted automatically. For further details, please speak with our admissions team.

MTeach(ECE) prepares graduates to make a meaningful contribution to the lives of children from birth to age five across a wide range of early childhood settings.



The MTeach(ECE) is a two-year, full-time course comprising 16 units in total.

Equipping you with the skills and knowledge to succeed in a dynamic job market







**Your future  
in education  
starts here.**

Inspiring curiosity, building confidence, and opening a world of possibility in young children during the years that matter most.

Your future is ready now at BBS.

***Ready to take  
the next step?***



# Course Structure

The table below provides an indicative study sequence for the MTeach(ECE) at Barton Business School.

Master of Teaching (Early Childhood Education)

	Year 1		Year 2	
	Semester 1	Semester 2	Semester 1	Semester 2
Placement Units	EDE401 Curriculum Design and Assessment in Early Childhood Education (12 cps) PX1: Birth to 2 years – 15 days PX2: 3 to 5 years – 15 days	EDE405 Ethics, Professional Identity and Leadership in Early Childhood Education (12 cps) PX3: 3 to 5 years – 15 days PX4: Ready to Teach – 15 days	Not Applicable	EDE508 Research Project B: Preferential Specialised Project (12 cps) PX5: Research in Practice – 10 days
Core Units	EDE402 Holistic Approaches to Early Childhood Learning, Development and Wellbeing (12 cps)	EDE406 The Arts in Early Childhood Education (12 cps)	EDE501 Trauma-informed Practice, Inclusion and Supporting Children with Specific Needs (12 cps)	EDE515 Elective – Inquiry Learning in Action (12 cps)*
	EDE403 Play-Based Pedagogies in Practice (12 cps)	EDE407 Inclusive and Culturally Responsive Practices (12 cps)	EDE502 Leadership and Management in Early Childhood Education (12 cps)	EDE525 Elective – Prosocial Behaviour Guidance in Early Childhood Education (12 cps)
	EDE404 Language, Literacy and Communication in Early Childhood Education (12 cps)	EDE408 Science, Numeracy and Technology in Early Childhood Education (12 cps)	EDE503 Global Perspectives and Comparative Pedagogies (12 cps)	EDE506 Critical Reflection and Quality Improvement in Early Childhood Education (12 cps)*
			EDE504 Research Project A: Research Inquiry in Early Childhood Education (12 cps)	EDE507 Literacy and Numeracy Curriculum (12 cps)

# Early childhood teacher registration and professional accreditation

The Master of Teaching (Early Childhood Education) (MTeach(ECE)) and the Graduate Diploma of Early Childhood Education (GDECE) are approved by the Australian Children’s Education and Care Quality Authority (ACECQA) as early childhood teaching qualifications for working with children from birth to five years of age. These courses prepare graduates for employment as early childhood teachers in early childhood education and care services, kindergartens and preschools. They are not designed for teacher registration or employment in primary or secondary school settings.

Completion of the MTeach(ECE) or GDECE provides an ACECQA approved early childhood teacher qualification that may be used to support an application for early childhood teacher registration where this is required. Registration and employment requirements are set independently by the relevant teacher regulatory authority and may include additional criteria such as English language proficiency and suitability assessments. In Victoria, students and graduates should refer to the Victorian Institute of Teaching for information about registration and employment requirements for early childhood teachers. Those who intend to work in other Australian states or territories can access information about local teacher registration and employment requirements on the ACECQA website at <https://www.acecqa.gov.au> or through the state and territory teacher regulatory authorities listed on the Australian Institute for Teaching and School Leadership website at <https://www.aitsl.edu.au>.

Students are required to obtain a current Working with Children Check and a National Police Check prior to commencing any professional experience placements. The cost of these checks is determined by the relevant external authorities and is payable by the student at the time of application. Failure to obtain the required checks may impact a student’s ability to undertake placements and progress in the course.

These courses prepare graduates for employment as early childhood teachers in early childhood education and care services, kindergartens and preschools.

# Am I eligible?

To be considered for admission to a course at BBS, applicants must satisfy BBS's minimum admission requirements, as well as any course-specific admission requirements. Meeting the minimum prerequisites for admission does not guarantee admission to a course. The entry requirements for the Graduate Diploma of Early Childhood Education and Master of Education (Early Childhood Education) include an assessment of the applicant's academic qualifications and English language proficiency, as well as professional experience (where relevant).

## 1. Entry requirements for international applicants

### For MTeach(ECE):

To be eligible for entry to a course, international applicants must:

- be at least 18 years of age at the time of course commencement; and
- meet the minimum English language requirements (all international applicants must obtain an overall score of 7.0 bands in the IELTS Test (Academic) with no less than 6.5 bands in all four parts of the IELTS test or equivalent; and
- satisfy criteria in one of the categories listed below.

### Applicants with higher education study:

BBS will consider international applicants who have successfully completed an Australian Bachelor's degree (AQF Level 7) or an equivalent qualification from another country. Where applicable, all applications for Credit or RPL must be submitted in accordance with BBS's Credit and Recognition of Prior Learning Policy and Procedures.

### Applicants with work and life experience:

BBS does not consider applications for admission based on work and life experience or informal study where formal higher education qualifications are not present. Entry is available only through the qualification pathways set out above.

## 2. Entry requirements for domestic applicants

### For MTeach(ECE):

All domestic applicants must:

- be at least 18 years of age at the time of course commencement; and
- satisfy criteria in one of the categories listed below.

### Applicants with higher education study:

BBS will consider domestic applicants who have successfully completed an Australian Bachelor's degree (AQF Level 7). BBS will also consider domestic applicants who have completed an equivalent qualification from another country. In these cases, the overseas qualification must have been completed in English, and the applicant must also provide evidence of English language proficiency. Acceptable evidence includes a valid IELTS Academic test with a minimum overall score of 6.5 (with no band less than 6.0) for the Graduate Diploma of Early Childhood Education, or a minimum overall score of 7.0 (with no band less than 6.5) for the Master of Teaching (Early Childhood Education), or another English language test recognised as equivalent by BBS.

### Exemptions from the English test evidence for applicants with overseas qualifications:

An English test result is not required if the applicant meets any of the following:

- is a citizen and passport holder of the United Kingdom, the United States of America, Canada, New Zealand, or the Republic of Ireland; or
- has completed at least five years of study in English in Australia, the United Kingdom, the United States of America, Canada, New Zealand, South Africa, or the Republic of Ireland; or
- has completed the Senior Secondary Certificate of Education in Australia in English; or
- has completed a qualification under the Australian Qualifications Framework at Certificate IV or higher in Australia, in English.

Applicants who do not hold a Bachelor's degree (AQF Level 7) or a recognised equivalent qualification may still be admitted if they have a Diploma of Early Childhood Education and Care or equivalent, along with evidence of a minimum of five years of relevant industry experience. Where applicable, all applications for Credit or RPL must be submitted in accordance with BBS's Credit and Recognition of Prior Learning Policy and Procedures.

### Applicants with work and life experience:

BBS does not consider applications for admission based on work and life experience or informal study where formal higher education qualifications are not present. Entry is available only through the qualification pathways set out above.







**BARTON  
BUSINESS  
SCHOOL**

BBS Higher Education Pty Ltd

**ABN:** 68 660 424 288

**A:** Level 1, 108-112 Johnston Street, Collingwood, VIC 3066, Australia

**E:** [admissions@bbs.vic.edu.au](mailto:admissions@bbs.vic.edu.au)

[www.bbs.vic.edu.au](http://www.bbs.vic.edu.au)

**TEQSA Provider ID:** PRV14397

**CRICOS Provider Code:** 04345J

**CRICOS Course Code:** 119513J